



Top 2000 TBI 7W (S, L)

Watercooling

Screw-on gas nozzles

Uses same consumables as TBI 411/ 511

Technical data

MIG/MAG (GMAW) Semi-automatic welding torch TBI 7W-S/7W-L

Rating at 100% duty cycle
(10 min. cycle)

- Mixed gas: 400 A (TBI 7W-L: 470 A)
- CO₂: 450 A (TBI 7W-L: 500 A)

Cooling method Watercooling

Wire diameter 1.0 - 1.6 mm

Gas flow 15 l/min

Technical specification according to IEC 60974-7

Weight with 1.5m cable 1.60 kg

Connection Euro-Central connector
Other connectors (e.g. Cloos®, ESAB®) available upon request.

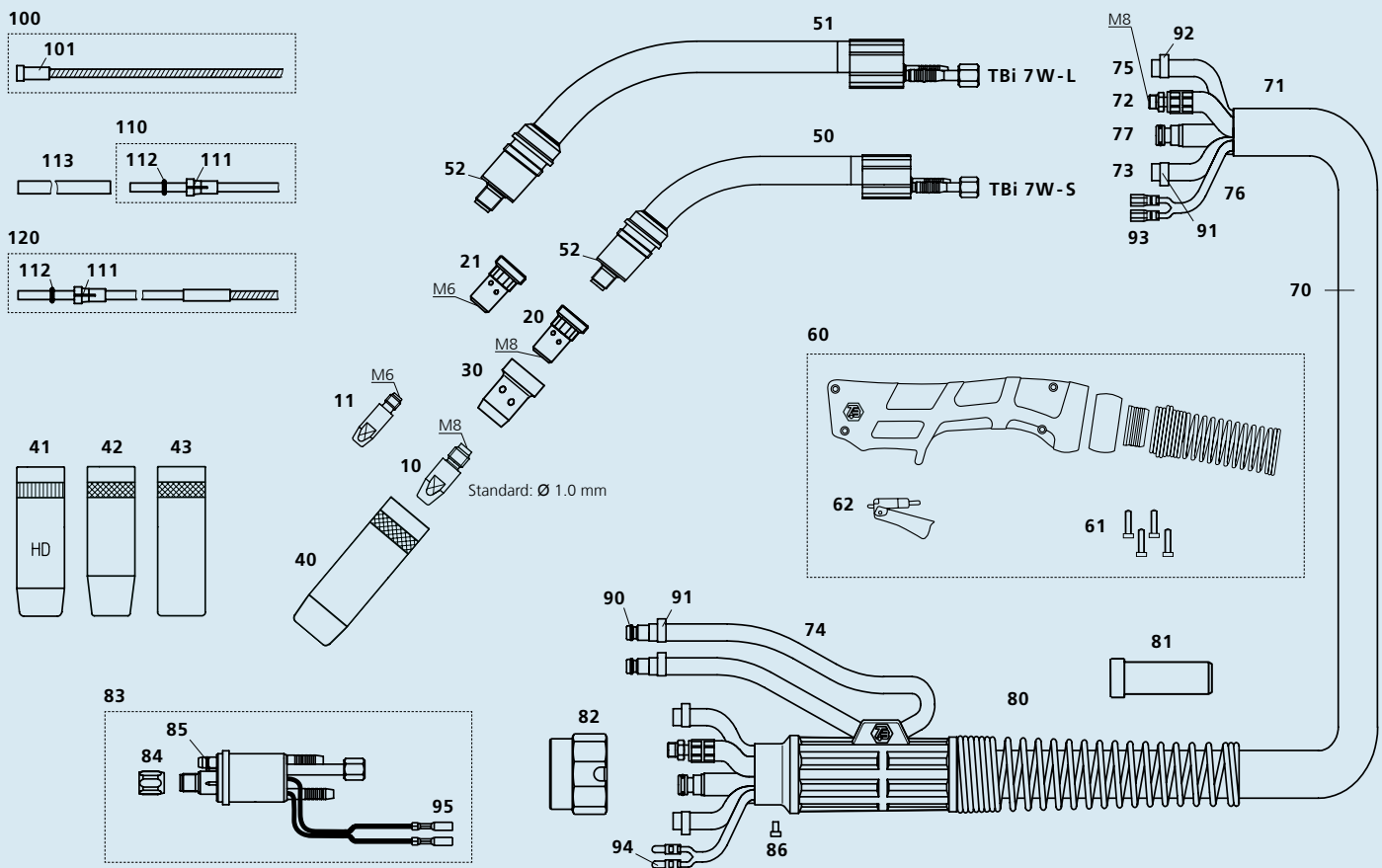
Torch rating will be reduced when using pulsed-arc power sources.
Special torch necks and custom lengths of the cable assembly are available upon request.

Ordering Information

TBI 7W-S ESW, 50° bent 174PK425_0*

TBI 7W-L ESW, 50° bent 174PL425_0*

* At the blank, please insert 3, 4 or 5 for a torch length of 3, 4 or 5 m.



Pos. Description Part. No.

Contact tips

▶ 10	Contact tip M8x30, Ecu	340P_1262*
10	Contact tip M8x30, CuCrZr	340P_3262*
10	Contact tip M8x30 Alu, Ecu	341P_1262*
11	Contact tip M6x28, Ecu	340P_1069*
11	Contact tip M6x28, CuCrZr	340P_3069*
11	Contact tip M6x28 Alu, Ecu	341P_1069*

Tip holders

▶ 20	Tip holder M8 / L=25 mm	342P008033
20	Tip holder CuCrZr M8 / L=25 mm	342P008171
20	Tip holder M8 / L=29 mm	342P008133
21	Tip holder M6 / L=25 mm	342P006033
21	Tip holder M6 / L=29 mm	342P006133

Gas diffusers

▶ 30	Gas diffuser, white	130P002017
30	Gas diffuser, ceramic	130P002019
30	Gas diffuser, black	130P002026
30	Gas diffuser, brown	130P002031

Gas nozzles

▶ 40	Nozzle con. diam. 16.0 mm	345P022171
41	Nozzle con. diam. 16.0mm HD	345P022271
42	Nozzle con. diam. 14.0 mm	345P023171
43	Nozzle cyl. diam. 19.0 mm	345P021171

Spare parts

50	Torch neck TBi 7W-S (short), 50°	174P101005
51	Torch neck TBi 7W-L (long), 50°	174P101006
52	Insulating washer	130P002004
60	Handle blue, watercooled, cpl. kit	380P220401
61	Cross recessed screw M3.5x14	100P008413

▶ = Standard equipment

* At the blank, please insert suitable information for torch length or wire diameter, e.g. 08 for 0.8 mm or 3 for 3 mm.

Pos. Description Part. No.

62	Trigger, red, 2 poles	385P021016
70	Cable assembly TBi Top 2000	171P4545_0*
71	Fabric outer cover 25x1.5 mm, cpl.	307P2528_A*
72	Rubber water-power cable (Top 2000)	314P1622_0*
73	Rubber hose, blue, 5x1.5 mm	303P150000
74	Rubber hose, red, 5x1.5 mm	303P160000
75	PVC-Gas hose, black 4.5x1.5 mm	302P010000
76	Control cable x.30 m cpl.	301P2304_0*
77	Wire conduit yellow (Top 2000)	356P0C0C_0*
80	Cable support 3 parts cpl. with spring	701P101071
81	Cable support 70 sqmm	600P002107
82	Adaptor nut	701P001013
83	Central adaptor ESW cpl., moveable pins (Top 2000)	701P101006
84	Sleeve nut M10x1	701P002005
85	O-ring 4.0x1.0 mm (gas nipple)	365P100040
86	Slotted screw M4x6	100P008401
90	Quick connector	701P002064
91	Hose clamp Ø 9.5 with ring	373P100095
92	Hose clamp Ø 8.7	371P000087
93	Cable lug, flat	375P000023
94	Insulated connector, male, round	375P000004
95	Insulated connector, female, round	375P000003

Wire guides

▶ 100	Liner w/o insulation (x.40 m) for wire 1.0-1.2	322P2045_4*
100	Liner w/o insulation (x.40 m) for wire 1.4-1.6	322P2545_4*
101	Collet for liners dia. 4.5 mm	330P025045
110	Teflon liner red (x.50 m) for wire 1.0-1.2	326P2040_5*
110	Teflon liner yellow (x.50 m) for wire 1.2-1.6	326P2747_5*
111	Collet for teflon and PA liner 2.0x4.0 mm	331P020040
111	Collet for teflon and PA liner 2.7x4.7 mm	331P027047
112	O-ring 3.50x1.50 mm (teflon liner)	365P150035
113	Support tube 5x4.4 mm, L=150 mm	329P544150
120	PA-Alu wire guide (x.50 m) for wire 1.0-1.2	328P2040_A*
120	PA-Alu wire guide (x.50 m) for wire 1.2-1.6	328P2347_A*
120	PA-Alu wire guide (x.50 m) for wire 2.0-2.4	328P2947_A*